



In the News

Former Student Granted Scholarship at Leiden University

By Fernanda Korovsky Moura



In the beginning of this year I received the news that I had been awarded the LExS Platinum Scholarship Award at Leiden University in the Netherlands by means of an internal selection at UFSC. The scholarship is for a Research Master course in Literary Studies at the Dutch university. I was very excited to begin this new academic journey after completing my MA at UFSC under the supervision of Prof. Dr. José Roberto O’Shea, who kindly encouraged me to take this next step. I arrived in this beautiful city called Leiden a few weeks ago, and I have already fallen in love with the canals, stroopwafels, bikes and flowers everywhere, and the friendly people willing to help me even though I speak no words in Dutch. My classes in the program

began this week. They are extremely interesting! As a scholar fascinated by Shakespeare, the Middle Ages and its reconstruction in fiction, I have been able to indulge myself with courses on Earthly and Heavenly Love in Medieval Literature, Gothic fiction, Shakespeare and Love, amongst other stimulating topics. This is definitely a great opportunity to enhance my skills as a literary researcher, broaden my literary repertoire, and get prepared for a future PhD in Brazil. Another fascinating aspect of Leiden is its international atmosphere. The city is famous for its university, housing a great number of Dutch and students from other countries, forming an international scholarly community. Only in the academic year of 2016-



2017 there are over two thousand foreign students at Leiden, filling the halls with conversations and discussions in diverse languages. Leiden University is the oldest university in the Netherlands. It was founded in 1575 by the Prince of Orange, William, as a reward for the city's courageous defence against Spanish attacks during the Eighty Years' War. It is such an honour to be able to study in this traditional university, where eminent people also studied or worked, for instance, members of the Dutch royal family, Albert Einstein, René Descartes, and Baruch Spinoza. I thank UFSC for providing me with this extraordinary experience. The selection to

the LExS Platinum Scholarship Award takes place every year in the months of November or December, and is directed to Master's students in the Humanities. Check out the SINTER website; perhaps Leiden will welcome you next year!

Click [here](#) to her Lattes

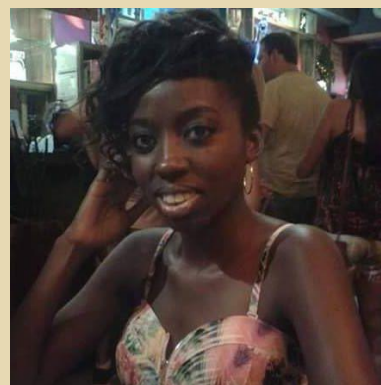


Fernanda Korovsky Moura was nominated to the Strix Literary Prize for her short story entitled "Cartas", published in the book *Étéreo*.

PGI News presents the newly elected students representatives



Maria Eduarda Rodrigues
(PhD Candidates)



Dayane Evellin de Souza Francisco
(PhD Candidates)



Adriana Rocha Felício
(MA Candidates)



Raimundo Nonato Souza
(MA Candidates)

Editorial Staff

Editors: Filipe Avila and Marina Martins Amaral

Design: Patricia Bronislowski



Faculty Profile



Beatriz Kopschitz Bastos

I have recently joined PPGI and am carrying on my Irish Studies research there. My current interest is in interdisciplinary research and practice in Irish literature, cinema, theatre and performance. Most recently, I have been studying documentary theatre: a genre that goes by a variety of names – such as theatre of the real, docudrama, verbatim theatre, reality-based theatre, theatre of witness, tribunal theatre, non-fiction theatre, or theatre of facts – and that uses documents, letters, diaries, reports, newspaper cuttings and interviews as primary material for the composition of plays. My research explores what the documentary genre represents for the theatre today, and how it has interacted with the history and culture of Ireland. It also explores how Irish documentary plays help define the theatrical practice of *Cia Ludens*, a theatre company based in São Paulo, which specializes in translating and staging Irish material, and with which I have been associated as producer and dramaturge for over ten years – thus allying theory and practice in a practice-led investigative approach. I have an MA from Northwestern University, USA, and a doctorate from the University of São Paulo. UFSC is also my *alma mater*: I completed two post-doctoral research projects at PPGI – *Contemporary Irish Theatre*, under the supervision of Professor José Roberto O’Shea, including a period as visiting scholar at Trinity College, Dublin; and *Ireland into Film: Screenplays and Critical Contexts*, including research at the Irish Film Institute in Dublin, focusing on the work of Irish filmmaker Alan Gilson, under the supervision of Professor Anelise Corseuil.

[Click here](#) to access her lattes



Donesca Xhafaj

When I first started studying Second Language Acquisition, during my M.A., my main interest were the challenges of second language (L2) speech production. From the challenge of producing language I went to the challenge of learning an L2, during my doctoral studies, and, since then, have been interested in the cognitive processes involved in the acquisition/learning of an L2 seen from an information processing perspective (McLaughlin, 1987; 1990). Since I am also an EFL teacher, I am constantly trying to connect research with what I observe in the classroom and vice-versa. Though I am aware that research does not necessarily need to inform pedagogy, I have been trying to study issues that might enlighten our understanding about beneficial L2 teaching/learning practices so as to make the most of the limited time our students spend in the EFL classroom. For the past 4 or 5 years, my focus has been in devising classroom activities that might make Focus-on-Form (Long, 1991) more likely to occur. One possibility that has been explored by Swain and colleagues (e.g., Swain & Lapkin, 1998; 2002) for some time is to use activities that require peer collaboration to be completed, as proposed by Vygotsky’s sociocultural theory (1978). The idea is that during metatalk about the activity learners will attend to form, and this might lead to restructuring (i.e., L2 development). My studies have also been situated within Skehan’s (1996; 1998) framework for task design and implementation within the Task-Based approach, and I have dealt both with oral and written tasks. In terms of collaborating conditions, participants have planned oral speech in pairs, written essays in pairs, corrected their own essays in pairs, and corrected their classmate’s work (peer correction).

[Click here](#) to access her lattes

Ongoing Research



Janaína Mirian Rosa

Throughout centuries William Shakespeare's *Hamlet* has caught the attention of diversified audiences. David Bevington in *Murder Most Foul* clarifies that "the play is

able to speak to persons and societies of all nations and all ages who have turned to it for better understanding of themselves" (vii). The contemporary reverberation of the play is emphasized by the critic, as he states that "our conversation with the play shows no signs of slowing down. We continue to reinvent *Hamlet* to this day" (199). Most importantly, it is relevant to take into account the subject of contextualization in performances of the play, as such study can illuminate the impact of significant issues regarding cultural, social and political scenarios. Drawing on Marco De Marinis's notion of "performance text", presented in his book *The Semiotics of Performance*, which encompasses stage-related aspects, such as set design, acting, among others (79), and the "context of production" in theatrical stagings (48), I will investigate in my doctoral dissertation four productions of *Hamlet* in relation to the approach to specific historical and political contexts. For the purpose of my study, I have so far selected three stagings from the Royal Shakespeare Company (RSC), more specifically the ones directed by Peter Hall (1965), Steven Pimlott (2001), and Michael Boyd (2004). I also intend to analyze the Brazilian performance of *Hamlet*, directed by Marcio Meirelles (2015), a production that made use of Professor José Roberto O'Shea's translation of the First Quarto of *Hamlet* into Portuguese.

[Click here](#) to access her lattes



Meggie Fornazari

I'm working on the localization of Trading Card Games. I want to find out why Brazilian players talk about the game using large amounts of borrowing from

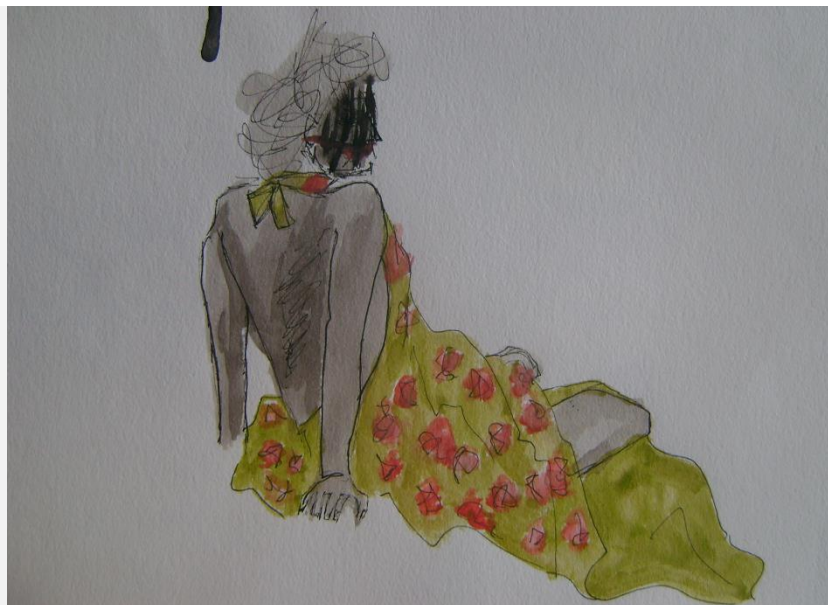
English when the game is fully localized into Brazilian Portuguese, in order to find out how translation options can be selected with a mind to usage. I've selected Magic: The Gathering as my research object to expand on my previous analyses, as I've already scratched the surface on what possible translation practices are used by its localization team when observing one release of cards. In fact, what I want to do is observe academically how the game metalanguage produced by Brazilian YouTube content creators, in order to explain why they use so much English when official Brazilian Portuguese translations are available. This PhD dissertation was just qualified by the committee, and one example I can already indicate at this point of the study is the use of some rules (keyword abilities) in English, such as trample instead of atropelar. Another example can be found from card names, such as using Splinter Twin instead of Gêmea Estilhaçadora, or Oblivion Ring instead of Anel do Esquecimento. I am currently building this corpus and analyzing YouTube Magic tutorials to collect borrowing instances. After I get permission from the Ethics Committee, I'll take the results from this stage and interview content creators to understand the issue further. In the meantime, I've been posting my academic presentations on my channel: [youtube.com/meghan1337](https://www.youtube.com/meghan1337) so stay tuned for more, coming soon!

[Click here](#) to access her latte

A PPGI informa que foram publicados os editais de seleção para Mestrado e Doutorado, com ingresso em 2017.1

As inscrições ocorrerão entre os dias 10 e 31 de outubro de 2016. Mais informações na Secretaria do Programa de Pós-Graduação em Inglês, sala 313, 3º andar, Bloco B, CCE. ppgi@contato.ufsc.br
Fone: (48) 3721-9455

Creative Corner



Marina Amaral: No title - Ink pen and watercolor on paper, 2009.



Marina Amaral: No title - Ink pen on paper, 2009.

"Fallacy"

Eduardo Santos

For thy words thou shalt be judged
 By taming others's libidinous desire
 Thy actions unfollow a logical way
 A principle treated mostly in dismay
 Shalt my body vanish on fire?
 For uncaging a feel barely budged

Oh my, thou seeketh an ego game,
 To boost it, does thou not?
 What an enticing lie thou say!
 For even my heart is far away
 And thou give myself nought,
 You always get a piece, my dame

Transpire coldly, inhale and exhale
 My body quiver in berserk anxiety
 Time drains soul, little by little
 Knowing nothing, it will whittle
 The eagerness, without piety
 By following your deceiving trail

Unveiled appetite, irresistible
 Uncontrolled tremor, unrestrainable
 Exerting words as child's play
 May distress a system, make it sway

Vanish thyself, run, my dear!
 For manifestating such scheme
 Thy voluptuous sillouette, delightful
 Devouring my purity, so spiteful
 A carnal passion, a muffled scream,
 In the darkness it calls you, disappear

Mine endeavours are not strong
 I, shall too, fool around
 With you would not it be wrong
 Even though you put myself down

Upcoming events

O Gótico em Cinema e Literatura – III Seminário de Pós-Graduação

Para mais informações, [clique aqui](#).

Dia 31 de outubro das 8h às 20h – CCE

JORNADA DE ESTUDOS SHAKESPEARIANOS - “Shakespeare e seus Contemporâneos”

Projeto interinstitucional entre UFSC, UDESC, UTFPR, UNIFESP e USP. Para mais informações, [clique aqui](#).

DIA 7 e 8 de novembro – Auditório Henrique Fontes – CCE

Call for Papers

Ilha do Desterro

Call for papers: Investigating Second Language Speech

Deadline: February 15, 2017.

Publication: September 2018. Vol. 71, N.3, Sept-Dec. 2018.

[Click here](#) for more Info.

Call for papers: Post-humanism

Deadline for submission: 15/November/2016

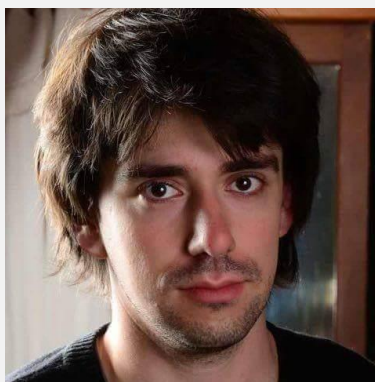
Publication date: May-August, Vol. 70, N.2, 2017.

[Click here](#) for more Info.

Fulbright – Split PhD/Subscriptions open until November 16th 2016.

Estudantes de doutorado brasileiros das áreas de ciências sociais, humanidades, letras, literatura e artes podem se candidatar a uma das 25 bolsas de nove meses de duração com início em agosto/setembro e término em abril/maio do ano seguinte. [Clique aqui](#) para mais informações

Congratulations to the PhD Candidates selected to apply for the PDSE Scholarship



Filipe Avila



Ketlyn Mara Rosa



Arthus De Vasconcellos Mehanna

This issue is dedicated to the “Pink October” campaign, which fights breast cancer and attempts to raise awareness of the importance of early diagnosis of the disease.

